

Ke 'Alemanaka

The Parish Postings

THE PARISH OF ST. CLEMENT
An Inclusive and Caring Christian Community

Vol.89 No.10

October 2018

From Pastor Heather



He took a little child and put it among them; and taking it in his arms, he said to them, "Whoever welcomes one such child in my name welcomes me, and whoever welcomes me welcomes not me but the one who sent me."

Mark 9:36-37

Jesus calls us to welcome children in our midst!
Jesus does not say welcome children who behave well, are quiet, do not make messes, sit quietly.
Jesus does say whoever welcomes a child

welcomes me! We have the opportunity to welcome God into our midst every time we see a child. How much more should we welcome them here at St. Clements!

As you enter our sanctuary these days, you will notice one pew has moved from the back right side. In its place is a new children's area, some churches call these areas "praygrounds." It is designed to be a place where children and their parents/grandparents/aunties/uncles are able to worship together. Where children are able to quietly read, play, color, or just feel at home during our services. Please know that the rocking chair is not just for those with small children. Everyone is invited to spend time rocking-it can be comforting during tough times or help you to focus while listening.

The First Sunday of each month children will be invited to stay in the church during the 10:15 service. There will not be Sunday School on these days, but there will be nursery care available. (God knows the parents of the youngest children need a few minutes to breath and pee



on their own.) During these services we will be having a children's message and some of our older children will be invited to read and participate in leading the service.

~~ Blessings
Pastor Heather

Meet our new Parish Secretary

Hello St. Clement's! My name is Niambi Mercado. What you should know about me:

- I have been a lifelong Episcopalian
- I moved to Hawaii from New Hampshire
- I am also a Catholic Worker Volunteer at St. Elizabeth's Catholic Worker House Wallyhouse. (If you are looking for volunteer opportunities to serve the houseless, please come to the office; we are always looking for helping hands!)
- I traveled to Hawaii with my furry friend Trinket the cat
- I play the cello
- I love meeting new people so come say hi to me Mon-Friday 8:30am - 1:00pm

Thank you so much for welcoming me into your community!



Ke 'Alemanaka

Published monthly by The Parish of St. Clement
1515 Wilder Avenue, Honolulu, Hawai'i 96822-4614

Office Phone: (808) 955-7745

Fax Phone: (808) 944-9325

Email: info@stclem.org

Website: <http://www.stclem.org>

Rector: Rev. Heather Hill

Priest Associate: Rev. George Clifford

Curate: Rev. Deacon Ha'aeo Guanson

Head of St. Clement's School: Jodi Yoshioka

Interim Director of Music: Beth Fincke

Parish Administrator: Carolyn Koehler

Parish Secretary: Niambi Mercado

Sexton/Groundskeeper: Stan Ornellas

Family Ministries:

Michelle Comeau and

Gail and Scott Suzuki-Jones

Senior Warden: Vacant

Junior Warden: Mary Carpenter

Treasurer: Martha Morgan

Clerk: Terry Ledford

Vestry

Dana Anderson

Moani Crowell

Pam Fern

Beth Fincke

Jose Henao

Helena Ishida

Kehau Kali Berquist

Carol Taylor Kim

Adrienne Lau

Attendance and Offerings for August, 2018

August Attendance 479

[no SCS Chapel services in August]

August Offerings \$19,612

YTD Income as of 8/31/18 \$373,956

YTD Expenses as of 8/31/18 \$403,117

Items for Ke 'Alemanaka may be submitted to the
Newsletter Editor, Arthur Buto

Phone: (808) 383-3930

Email (preferred): thebuto@yahoo.com

DEADLINE FOR THE NOVEMBER ISSUE

Monday, October 15, 2018



*Hau'oli la hanau to all those
born in October!*

October 1	Byron Gangnes
October 3	Bruce Schlieman
October 5	Ray Tamura
	David Yew
October 7	Harrison Ishida
October 9	Julia Tom
October 10	Peter Gibson
	Suzanne Kaneshiro
October 11	Helena Schaefer
October 13	Salesi Lino
	Linda Lucas
October 14	Jaeson Tamura
October 15	Dean Fraser
	Tanner Haworth
	Amelia Levy
	Bonnie Rice
October 17	Jessica Gronna
	Danny Schoen
October 18	Tau'eva Lino
October 19	Sally McDermott
	Manny Wong
October 20	Andrew Carpenter
	Emily Waters
October 21	Rebecca Mehle
October 22	Melvin Nakamura
October 23	Tucker Haworth
October 24	Anne Cicero
	Mike Town
October 27	Laurel Schoen
October 29	Hew Reynolds
October 30	Beth Bosworth
October 31	Kiki Fordham
	Kingsley Wong

If we missed your birthday, please let the office know!

Mahalo Nui Loa...

- ♥ To **Mary Carpenter**, for serving as project manager overseeing the termite tenting, painting, and re-roofing of the church. She spent many, many, many hours seeing that the workers worked and that jobs were completed as promised. She learned more about EPA regulations, lead testing, roof pitch, gutters, shingles, barge rafters, and carpentry than she ever expected. She was on the roof several times (including once in her bare feet) and she even climbed into the bell tower to make the fabulous rubbing that has been framed and placed in the church. As Pastor Heather said at the rededication on September 8, if you need something done, hire Mary Carpenter.
- ♥ To **the SCS Na`Ohana** for providing the popcorn, cotton candy, and balloon man for the anniversary party. They were enjoyed greatly by the adults as well as the keiki.
- ♥ To **Pam Fern** for organizing the food for the anniversary party and to her kitchen crew of **Jane Anderson, Beth Fincke, Leslie Isaki, Adrienne Lau, Sandy Souza, and Joni and Kingsley Wong** for making the food and transporting it from the kitchen to the music building. (Pam will let me know when she returns if I've missed anyone.)
- ♥ To **Carol Taylor Kim** and **Jose Henao** for "manning" the welcome table at the anniversary party where we gave away St. Clement's canvas bags and T-shirts. If you haven't received a red canvas bag, please see Pastor Heather or just stop in to the church office and request one.
- ♥ To **Beth Fincke** for putting together the shadow box collage of historic photos surrounding the broken cross that used to be atop the church.
- ♥ To **Mark Haworth and friends** who provided live music on the church lanai during the anniversary party.
- ♥ To **Mike Fazio** who came from Connecticut to tune the organ and then stayed to play the organ during the rededication service and played additional music after the service.
- ♥ To **Jose Henao** who spent several Thursdays at the Farmers Market passing out anniversary party invitations to our neighbors.
- ♥ To **Ben Douglass**, the new parking/security attendant for the school, for videotaping the rededication service.
- ♥ To **Rich Lowe** for assisting Mike Fazio with the organ tuning.

Annual Blessing of the Animals

At the Market Thursday, October 4, 5-6 pm
At the 10:15 service (only) Sunday, October 7

Capital Improvement Projects Up-date...

With the tenting, painting, and re-roofing completed, we want to once-again thank those who contributed financially to these projects. Although the majority of the funds for these projects came from Sally Edwards' planned gift to St. Clement's, the following people have made it possible for us to maintain a Capital Improvement fund for the future. Mahalo nui loa to each of you.

It's not too late to join our donors to these projects. We will be installing a plaque in 2019 and would be happy to include you on it.

Jane Anderson
Diane Barrett
Bobbie Brodhead
Andrew Carpenter
Matt and Nicole Chapman
Amanda Doty
Beth Fincke
Dorri Goodrich
Mark Haworth
Yukie Ichikawa
Annette Jim
Jim and Melvia Kawashima
Carolyn Koehler
Dora Kraul
Vi Loo
Francis and Bertha Lum
Elizabeth McCutcheon
Nellie McLaughlin
Jim and Sue Quimby
Sandy Souza
Rhett and Linda Taber
Kimo Tamayo and Bu Pascasio
Ray and Darlene Tamura

And for the new crosses which are dedicated to Thomas H. and Elizabeth S. Brodhead from their family in Epping, NH:

Virginia Brodhead LaPierre
Jennifer and Maurice Yergeau
Michael and Leah Yergeau and children
Jason and Nicole Yergeau and children
Christopher Yergeau
Harris and Alicia Hatfield and children
Heidi and Glen Peabody and children
Malie Hatfield

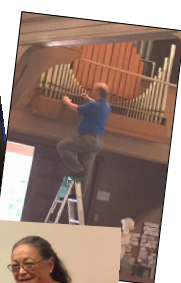
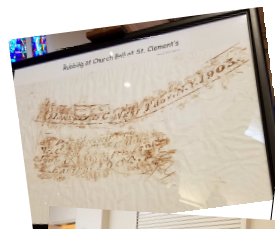
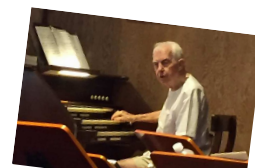
CELEBRATING



120 YEARS

St. Clement's Rededication

Saturday, September 8, 2018





St. Clement's School News

Con"grad"ulations!

SCS would like to congratulate the following SCS Alumni students who recently graduated from 'Iolani School:

Emi Muranaka	<i>Duke University</i>
Taylor Takeuchi	<i>University of Oregon</i>
Reid Ueki	<i>University of Hawaii at Manoa</i>
Joy Uetake	<i>Temple University Japan</i>
Landon Wong	<i>University of Hawaii at Manoa</i>
Lansing Wong	<i>Loyola University Maryland</i>

We send our best wishes to all of our amazing graduates! If you know of any other SCS alumni that recently graduated from high school we would love to hear from you!

There are many St. Clement's School graduates in our community and we often meet them in surprising places. The Church Parish Administrator recently was shopping for office equipment and the VP of Operations who wrote up her order said, "Oh, I went to that school!" Founded in 1949, SCS will celebrate its 70th anniversary next year.



Anniversary/Dedication Wrap Up

Saturday, September 8, was a true celebration for St. Clement's. The photos on the previous page (taken by Arthur Buto) give just a taste of this wonderful event. Our 120th anniversary party included hot dogs, chili, nachos, cookies, watermelon, popcorn, cotton candy, balloon animals (and flowers and swords), live music, family fun, renewing old acquaintances, displays of old church records and photos, as well as the rededication of our worship space by Bishop Bob Fitzpatrick. And there was cake! We even received well wishes from former parishioners (see note from Delphine on the right and photos on page 9). Please be sure to thank the people shown on page 3 for all the work they put into this fabulous day. There are more photos on page 9.



Dates to Remember in October!

Each Tuesday from 8:30am-9:15am, SCS will offer tours to prospective families.

We meet in the chapel for an informational session and then tour our guests. Please feel free to join us if you would like to learn more about the wonderful things our school has to offer. If you know of any interested families, please have them call our office to reserve a space. (808) 949-2082.

Enrichment classes begin: SCS is blessed to announce many options for our students to engage in after-school enrichment opportunities. The following courses will be offered:

Mondays	Math, Music and Motion Keiki Fitness
Tuesdays	Japanese Language Movers and Shakers
Wednesdays	Soccer Keiki Hula Ballet/Tap
Thursdays	<i>No classes</i> <i>Farmer's Market Open</i>
Fridays	Creative Movement Sensory Enrichment

Hi Carolyn

I would like to offer my Congratulations to all at St Clement's Parish. The years I spent in Honolulu, Hawaii were made very memorable by my association with everyone I met at St. Clement's!! I wish all at St. Clement's a great celebration of 120 years and another 120 years of love ♥, community, and showers of blessings on all who enter your welcoming doors!

Much love and prayers
Delphine Jamieson



OCTOBER 2018

Sun	Mon	Tue
<p>Note: Tuesday office hours during October: October 2: 8:30 am-8 pm October 9, 16, 23, 30: 8:30 am-7 pm</p>	<p>1 Pastor Heather @ EAM Conf. 8:00 SCS Chapel-CH 8:30 SCS Dance-PH 2:00 Child Watch-PH 5:00 Hula-PH 5:30 Tae Kwan Do-PG 7:00 Mankind Project-MB 7:30 AI-Anon-PH</p>	<p>2 8:30 SCS School Tour-CH 1:30 Staff Meeting-PH1 2:00 Child Watch-PH 5:00 Labyrinth Open-PKG 6:00 Prop. Comm. Mtg.-PH1</p>
<p>7 7:30 Holy Eucharist-CH 8:45 Bible Workbench-PH2 8:45 Adult Discussion-PH 10:00 Sunday School 10:15 Holy Eucharist-CH 10:15 Family Sunday/Blessing of the Animals-CH 5:00 Hui Lāpule La‘i Mtg-MB 7:00 Daily Reflections-PH</p>	<p>8 Discoverer’s Day School/Offices closed 5:00 Hula Class-PH 5:30 Tae Kwan Do-PG 7:00 Mankind Project-MB 7:30 AI-Anon-PH</p>	<p>9 8:45 SCS City Bus Visit-Pkg 8:30 SCS School Tours-CH 1:30 Staff Meeting-PH1 2:00 Child Watch-PH 6:00 Vestry Meeting-PH</p>
<p>14 Outreach Sunday 7:30 Holy Eucharist-CH 8:45 Bible Workbench-PH2 8:45 Adult Discussion-PH 10:00 Sunday School 10:15 Holy Eucharist-CH 11:30 Prayer Chain Mtg.-PH1 11:30 I.H.S. Cooking-KIT 5:00 Hui Lāpule La‘i Mtg-MB 7:00 Daily Reflections-PH</p>	<p>15 8:00 SCS Chapel-CH 8:30 SCS Dance-PH 12:00 Tourist Wedding-CH 2:00 Child Watch-PH 5:00 Hula Class-PH 5:30 Tae Kwan Do-PG 7:00 Mankind Project-MB 7:30 AI-Anon-PH Ke`Alemanaka Deadline</p>	<p>16 9:00 SCS School Tours-CH 9:50 Kupuna Day-PH 1:30 Staff Meeting-PH1 2:00 Child Watch-PH 5:00 SCS Board Meeting-PH</p>
<p>21 7:30 Holy Eucharist-CH 8:45 Bible Workbench-PH2 9:00 Mtg of ALL Food Ministries-PH 10:00 Sunday School 10:15 Holy Eucharist-CH 2:00 Tourist Wedding- CH 5:00 Hui Lāpule La‘i Mtg-MB 7:00 Daily Reflections-PH</p>	<p>22 8:00 SCS Chapel-CH 8:30 SCS Dance-PH 10:00 Tourist Wedding-CH 11:30 Tourist Wedding-CH 12:30 Tourist Wedding-CH 2:00 Child Watch-PH 5:00 Hula Class-PH 5:30 Tae Kwan Do-PG 7:00 Mankind Project-MB</p>	<p>23 9:00 SCS School Tours-CH 11:00 Tourist Wedding-CH 12:30 Tourist Wedding-CH 1:30 Staff Meeting-PH1 2:00 Child Watch-PH 6:15 Exec. Comm. Mtg-PH1</p>
<p>28 7:30 Holy Eucharist-CH 8:45 Bible Workbench-PH2 8:45 Adult Discussion-PH 10:00 Sunday School 10:15 Holy Eucharist-CH 5:00 Hui Lāpule La‘i Mtg-MB 7:00 Daily Reflections-PH</p>	<p>29 8:00 SCS Chapel-CH 8:30 SCS Dance-PH 2:00 Child Watch-PH 5:00 Hula Class-PH 5:30 Tae Kwan Do-PG 7:00 Mankind Project-MB 7:30 AI-Anon-PH</p>	<p>30 9:00 SCS School Tours-CH 1:30 Staff Meeting-PH1 2:00 Child Watch-PH</p>

Wed	Thu	Fri	Sat
3 8:00 SCS Chapel-CH 8:00 SCS School Photos- PH 10:00 Healing Eucharist-CH 2:00 Child Watch-PH 3:45 Keiki Hula-PH 5:30 OA Mtg.-SL 5:30 Tae Kwan Do-PG 5:30 Na 'Ohana Mtg-PH 6:00 EFM-PH1	4 8:00 SCS School Photos-PH 10:00 Holy Eucharist-Arcadia 4:30 Farmers Market-PKG 5:00 Blessing of Animals-PKG 6:30 Choir Rehearsal-CH	5 Clergy Sabbath 8:00 SCS Chapel-CH 8:30 SCS SCS Dance-PH 2:00 Child Watch-PH 5:45 Hui Pō'alima 'Alaneo-MB 8:00 Strivers for Sobriety-PH	6 9:00 Altar Guild-CH 9:00 Hui Pō'aono Wāhine-MB 9:30 RYSE- PH
10 8:00 SCS Chapel-CH 10:00 Healing Eucharist-CH 1:00 Pringle Interment-COP 2:00 Child Watch-PH 3:45 Keiki Hula-PH 5:30 OA Mtg.-SL 5:30 Tae Kwan Do-PG 6:00 EFM-PH1	11 8:45 Kapuna Day B3-PH 9:00 I.H.S. Cooking-KIT 4:30 Farmers Market-PKG 6:30 Choir Rehearsal-CH	12 Clergy Sabbath 8:00 SCS Chapel-CH 8:30 SCS SCS Dance-PH 2:00 Child Watch-PH 5:45 Hui Pō'alima 'Alaneo-MB 8:00 Strivers for Sobriety-PH	13 9:00 Altar Guild-CH 9:00 Hui Pō'aono Wāhine-MB 9:00 iFoG-PH 4:00 Tourist Wedding
17 8:00 SCS Chapel-CH 10:00 Healing Eucharist-CH 2:00 Child Watch-PH 3:45 Keiki Hula-PH 5:30 OA Mtg.-SL 5:30 Tae Kwan Do-PG 6:00 EFM-PH1	18 10:00 SCS Kupuna Day B1-PH 4:30 Farmers Market-PKG 6:30 Choir Rehearsal-CH	19 Clergy Sabbath 8:00 SCS Chapel-CH 8:30 SCS SCS Dance-PH 2:00 Child Watch-PH 5:45 Hui Pō'alima 'Alaneo-MB 8:00 Strivers for Sobriety-PH	20 9:00 Altar Guild-CH 9:00 Hui Pō'aono Wāhine-MB 10:30 Food Dist. Prep-PH/KIT 11:30 Food Distribution-PH/KIT
24 8:00 SCS Chapel-CH 10:00 Healing Eucharist-CH 11:00 YO! House Cooking-KIT 2:00 Child Watch-PH 3:45 Keiki Hula-PH 5:30 OA Mtg.-SL 5:30 Tae Kwan Do-PG 6:00 EFM-PH1	25 Clergy Sabbath 4:30 Farmers Market-PKG 6:30 Choir Rehearsal-CH	26 8:00 SCS Chapel-CH 8:30 SCS SCS Dance-PH 2:00 Child Watch-PH 5:45 Hui Pō'alima 'Alaneo-MB 8:00 Strivers for Sobriety-PH	27 9:00 Altar Guild-CH 9:00 Hui Pō'aono Wāhine-MB
31 Halloween 8:00 SCS Chapel-CH 8:30 SCS H`ween Parade-PKG 8:30 Holy Folders-PH 10:00 Healing Eucharist-CH 2:00 Child Watch-PH 3:45 Keiki Hula-PH 5:30 OA Mtg.-SL 5:30 Tae Kwan Do-PG 6:00 EFM-PH1 Ke`Alemanaka Assembly			<u>Key</u> CH - Church PH - Parish House, main hall PH1 - Mtg room 1 in Parish House PH2 - Mtg room 2 in Parish House MB - Music Building SL - Staff Lounge KIT - Kitchen PG - Playground PKG - Parking Lot

Diocesan Annual Convention in Kona



URGENT ACTION APPEAL

September 2018

Report from Gaza and East Jerusalem: Ahli Hospital and Princess Basma Center Struggle to Provide Services

Since the announcement last week that the U.S. would roll back \$200 million in aid pledged to assist Palestinian refugees through the United Nations Relief and Works Agency (UNRWA) and this week's news that the U.S. government will cut an additional \$25 million in direct aid to support hospitals in Jerusalem, we've been speaking with our friends in the Diocese of Jerusalem about the impact on Ahli Hospital and Princess Basma Center.



Al Ahli Arab Hospital in Gaza City

Ahli Hospital's ability to care for patients will be deeply impaired by the \$200 million cut to U.S. contributions to UNRWA. This agency, which was formed in 1949 to specifically address the humanitarian needs of Palestinian refugees, has an agreement to provide Ahli Hospital \$56,000 per month to support medical referrals. This has been reduced to a maximum of \$14,000 each month - a 75% reduction in what had been a sustained source of funding.

Princess Basma Center for Disabled Children, East Jerusalem

The Princess Basma Center for Disabled Children in East Jerusalem is a member of the East Jerusalem Hospital Network, which has been targeted for cuts in U.S. aid totaling \$25 million.

For the Princess Basma Center, an internationally accredited therapy and rehabilitation center and inclusive K-12 school, these cuts in funding are compounded by the inability of other key funding sources to reimburse Princess Basma for services. The Ministry of Health, the Military Medical Services, and UNRWA combined have overdue balances to Princess Basma totaling \$1.7 million.

The overdue balances coupled with the fresh cuts in U.S. aid threaten the ability of Princess Basma Center to provide continuity of medical care and rehabilitative services to children and families.

As many of you know, Princess Basma Center is a unique and progressive center that serves families and children throughout Jerusalem and the West Bank. It provides a residential early intervention program that trains mothers in caring for their children with disabilities. The Center offers the only comprehensive autism program available to Palestinian children in Palestine, Israel, and Jordan. It serves families in outlying villages with an extensive network of outreach programs.

What can you do to help?

Suddenly - in the space of two weeks - two health care facilities that provide critical, humanitarian service to the most vulnerable of our brothers and sisters in the most desperate conditions find their operations in serious jeopardy.

You can step in and help keep the doors open for all at Ahli Hospital or the Princess Basma Center (or both!).

[Please give generously to sustain Ahli Hospital and Princess Basma Center at this time of deep financial need.](#)

Keep the staff of these institutions and all those they serve in your prayers.

Thank you for your support.



Ahli Hospital Director Suheila Tara-z greets a young burn patient

American Friends of the Episcopal Diocese of Jerusalem

25 Old King's Highway North, Suite 13, Darien, CT 06820

Farmers Market Ministry Teams

Volunteer to help with this ministry by contacting
Pam Fern (943-8987 or 561-1070) or Tim Hurd (372-9563)

Task	October 4	October 11	October 18	October 25
Point Person for/Set Up & Parking 3:00-5:30pm	Keith Kalway	Keith Kalway	Pam Fern	Pam Fern
Parking 3:30-5:30 pm	Ben Douglas	Ben Douglas	Ben Douglas	Ben Douglas
Set Up 4:15-4:45 pm	Tim Hurd	Dana Anderson	Steve Marcuccilli	Steve Marcuccilli
Point Person 5:30-7:30 pm	Pam Fern - 561-1070			
Receipts, Rents 6:30-7pm	Martha Morgan	Susan Palmore	Michele Morikami	Susan Palmore
Take down/ Closing* 7:20-8pm	Beth Fincke Terry Ledford John Marlowe*	Soane Lino or Nicholas Lino Sandy Souza Arthur Buto*	Jim Mattingly Ken Morikami Terry Ledford*	Steve Marcuccilli Pam Fern*

From Bishop Bob Fitzpatrick

I urge all Episcopalians in the Diocese of Hawai'i and the Episcopal Church in Micronesia to pray for those impacted by Typhoon Mangkhut (called Ompong in the Philippines).

Compassionate God, draw near to those impacted by Typhoon Ompong in this time of sorrow and anguish, comfort those who mourn, strengthen those who are weary, encourage those in despair, and lead us all to fullness of life; through the same Jesus Christ, our Savior and Redeemer, who lives and reigns with you, in the unity of the Holy Spirit, God for ever and ever. Amen,

Because of the historic connections and direct continuing family links to the areas of the Philippines most impacted by the storm, I will ask for a special collection to be taken in our churches on a designated Sunday (9/30 at St. Clement's) to be sent directly to the Church in the impacted areas.

If members want to make individual donations toward this emerging effort, checks (with "Typhoon Ompong Relief" noted in the memo) maybe sent to our office:

The Episcopal Church in Hawai'i
Attn: Typhoon Ompong Relief
229 Queen Emma Square
Honolulu, HI 96813-2304

Yours faithfully,
+Bob



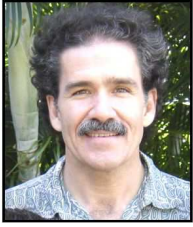
More Parish Party Snap Shots



Our anniversary party brought visits from some dear friends. Above left: Alison Dingley and Willis Moore; above right: George and Grace Lee. At left: Mark Haworth brought along his friends to enhance our party with live music on the lanai.



A View from the Pew



"We must lay before God what is in us; not what ought to be in us."

C.S. Lewis / Author & Theologian

We are all victims of a vast misunderstanding about what prayer is and, as a result, its purpose. It is comparable to our vast misunderstanding of God's Will, not to mention our own free will, and more likely than not all of these misunderstandings are intimately related. Indeed, it is arguable that our collective misunderstanding of prayer, God's Will, and our own free will is the root cause of why most of us do not pray as much as we should and for what we should, and why many of us do not pray at all.

Depending on who or what you want to believe, there are generally between four and nine different types of prayer, and even as many as twelve, depending on who or what is splitting the hairs. Even so, in Christianity at least, all of our prayers boil down basically to the four different varieties of prayer as described anecdotally by Luke in Acts 4, which are: Adoration, meaning praising God for God's goodness, wisdom, and ultimate authority; Repentance, meaning confessing our sins, anything which divides us from our neighbors and God, and promising to atone for them to the best of our abilities; Thanksgiving, meaning to be thankful for the abundance we have been provided for in body, mind, and soul; and, Supplication, meaning asking God to intercede on our own behalf and/or on behalf of our families, friends, neighbors, and even our enemies. All other forms of prayer, and there are probably many more than even twelve, for all practical purposes are a subset of these four modes of prayer.

All this being said, what is striking is how much we limit ourselves in our prayers and demand that others do the same. We are outraged that a homeowner in Waianae would give thanks to God for answering her prayers and sparing her home from a brush fire, especially when the homes of her neighbors were consumed in the flames. We argue how can we, in good conscience and faith, pray for personal healing and well-being when the prayers of so many others who are woefully afflicted go apparently unanswered? How dare students pray for good grades in school, athletes for winning games, employees for raises and promotions, employers for profitability, elected and appointed officials for triumph in governance, and militaries for victory in battle and war, when so many of us are subject to failure, loss, stagnation, defeat, and death and destruction? Would not the right and just thing be for us to simply pray for God's inspiration, guidance, strength and leadership, instead? Absolutely not.

Yes, while Divine inspiration, guidance, strength and leadership are right and just things to pray for, and we should do so every day, who are we really to censor what God hears from us? Who are we indeed to decide what God does for us? In fact, who are we to decide what God hears from others, let alone what God does for others? Who are we anyway to put any kind of limitations whatsoever on how we or others

encounter God and vice versa? To do so means that we, in our mutually inclusive ignorance and arrogance, are putting restrictions on God. We are saying that God is limited, that God is not Divine, and that God is not Infinite or Eternal. In other words, we are creating a God in our very own image, a very mundane, a very finite, and a very ephemeral human image, and in the process, we unwittingly reject the very image of God within us, and God's very self among us.

When the Apostle Paul in Philippians 4:6-7 said, *"Do not worry about anything. Instead, in everything, by prayerful supplication and thanksgiving, let your requests be made known to God. Then the peace of God, which surpasses all understanding, will guard your hearts and your minds in Christ Jesus."* he was not saying, "do not worry." Rather, Paul was saying do not worry about what we pray for. Put it in context. He was saying that, by making ourselves completely known to and understood by God in our prayers, that God in turn would make us completely known to and understood by ourselves. That in this divine conversation, in the give and take between us and God, that our prayers imperative and profound, dispensable and mundane, will evolve into God's answers. That our real and true desires and needs, known already by God yet buried underneath our preoccupations, unbridled ambitions and insatiable cravings, will become known to us, too. That our voice will become God's voice. That our free will is transformed into God's Will.

"Rejoice always, pray without ceasing, give thanks in all circumstances; for this is the will of God, in Christ Jesus, for you."

The Apostle Paul / 1 Thess. 5:16-18

*~~ Submitted by
Scott Suzuki-Jones*



October 2018 Lay Ministers

	October 7	October 14	October 21	October 28
Year B Office Lect.: 2	Twentieth Sunday after Pentecost	Twenty First Sunday after Pentecost	Twenty Second Sunday after Pentecost	Twenty Third Sunday after Pentecost
Readings	Job 1:1; 2:1-10 Psalm 26 Hebrews 1:1-4; 2:5-12 Mark 10:2-16	Job 23:1-9, 16-17 Psalm 22:1-15 Hebrews 4:12-16 Mark 10:17-31	Job 38:1-7, (34-41) Psalm 104:1-9, 25, 37b Hebrews 5:1-10 Mark 10:35-45	Job 42:1-6, 10-17 Psalm 34:1-8, (19-22) Hebrews 7:23-28 Mark 10:46-52
Flowers	Beth Fincke	Kiki Fordham	Beth Fincke	Beth Fincke Adrienne Lau

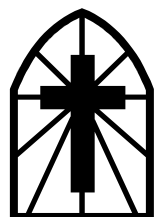
7:30 am Service

Lector	Keith Kalway	Kingsley Wong	Hew Reynolds	Keith Kalway
Lect/Euch. Min	Dana Anderson	Martha Morgan	Scott Hauger	Susan Palmore
Euch. Minister	Scott Hauger	Susan Palmore	Pam Fern	Dana Anderson
Altar Guild	Sandy Souza	Sandy Souza	Pam Fern	Cecilia Fordham
Ushers	Harrison Ishida Sandy Souza	Sandy Souza	Wong Family	Sandy Souza
Coffee Hour	Tahmi Brodhead	Wong Family	Leslie Isaki	Cecilia Fordham

10:15 am Service

Lector	Youth member	Elizabeth McCutcheon	Meleanna Meyer	Gayle Chang
Lect/Euch. Min	Moria Amjadi	Brad Siefkes	Jane Anderson	Brad Siefkes
Euch. Minister	Susan Palmore	Paris Priore-Kim	Moria Amjadi	Jane Anderson
Altar Guild	Beth Fincke	Beth Fincke	Beth Fincke	Beth Fincke
Ushers	Liz Baldwin Terry Ledford	Arthur Buto Terry Ledford	Liz Baldwin Keli'i deFrancia	Arthur Buto Trey Frank
Coffee Hour	Keli'i deFrancia	Tau'eva Lino	Martha Kaser Terry Ledford Nellie McLaughlin	Liz Baldwin
Offering Counters	Terry Ledford Brad Siefkes	Liz Baldwin Brian Crow	Joni & Kingsley Wong	Arthur & Lisa Buto

Greeters: **7:30 - Volunteers are needed**
 10:15 - Jane Anderson
 Elizabeth McCutcheon





the **Parish** of **St. Clement**

Episcopal An Inclusive and Caring Christian Community

1515 Wilder Avenue
Honolulu, Hawai'i 96822-4614

ADDRESS SERVICE REQUESTED

Nonprofit Org.
U.S. POSTAGE
PAID
Honolulu, Hawai'i
Permit No. 1243

Schedule of Worship Services
Sundays: 7:30 am and 10:15 am
Wednesdays: 10 am

Datebook

Thursday, October 4
5-6 pm Blessing of the Animals at Farmers Market

Sunday, October 7
10:15 Family Service & Blessing of the Animals

Monday, October 8 - **Discoverer's Day**
Offices and School Closed

Tuesday, October 9
6 pm Vestry meeting

Sunday, October 14
Following both Services
Make sandwiches; sort & bag groceries

Monday, October 15
Ke`Alemanaka Deadline

Saturday, October 20
11:30 Food Distribution & Lunch ministry

Sunday, October 21
9-10 am - Meeting of ALL food ministries

Wednesday, October 31
Ke`Alemanaka Assembly

Parish Office Hours:
Monday thru Friday 8:30 am to 4:00 pm
Tuesdays 8:30 am to 7:00 pm
Staff meetings - Tuesdays, 1:30 pm to 2:30 PM

Thursdays
4:30 pm Farmers Market